



BOOSTER PRO

User Manual

medicube⁺

medicube.us

Copyright © 2024, APR Corp.
All Rights Reserved.





For more detailed instructions on how to use this product, please scan the provided QR code.

Component Names



Operation Instructions

1. Press and hold the ③ Power Button for 2-3 seconds to turn on the product. When the power is turned on, the ② LCD Screen will light up with an ON sound effect, and it will automatically be set to Booster Mode at level 1.
2. Briefly press the ④ Mode Button once to select the desired mode. Each press of the ④ Mode Button will display the mode on the ② LCD Screen, and with each mode change, the mode-specific LED color will be displayed on the ⑤ Color LED Display along with mode guidance voice. *The modes change in the following order: Booster Mode → MC Mode → Derma Shot Mode → Air Shot Mode.
3. After setting the mode, press the ③ Level Button briefly once to adjust the level. With each button press, the level will increase by one, and the adjusted level will be displayed on the ② LCD Screen. *You can set it from level 1 to 5, and it is recommended to start with level 1 when using it for the first time.
4. Once you have set the mode and level, use the product according to the specific instructions for each mode. Before using, be sure to familiarize yourself with the instructions for each mode.
5. During use, the usage time will be announced every minute. If you use the product for over 5 minutes, it will display a waiting screen for mode change on the ② LCD Screen along with a completion announcement. If no button or app operation is performed within 10 seconds, it will automatically shut down. If you want to use the next mode, press the ④ Mode Button briefly once within 10 seconds to change the mode.
6. For hygienic use, after using, be sure to clean the ① Head thoroughly with a dry cloth or cotton pad and store it.
7. Charging can be done by connecting the included Type -C charger to the ⑧ Charging Port on the bottom rear side of the product. *During charging, the charging status will be displayed on the ② LCD Screen along with a charging connection sound, and the product will not operate.

Product Components

Main Unit, USB Charging Cable, User Manual

Table of Contents:

01. Precautions During Use and Specification

Precautions During Use	01
Storage Precautions	01
User Precautions	01
Specification	02

02. BOOSTER PRO Guide

Main Mode Overview	03
Mode Sequence	03
LED Indication	04
Mode-Specific Sonic Vibration	04
Skin Contact Sensor	04

03. Bluetooth Connection

Bluetooth Function Overview	05
Bluetooth Connection Instructions	06
Precautions When Connecting via Bluetooth	06

04. Booster Mode

How to Use	07
Precautions Before Use	07
Quick Start Guide	08

05. MC Mode

How to Use	09
Precautions Before Use	09
Quick Start Guide	10

06. Derma Shot Mode

How to Use	11
Precautions Before Use	11
Quick Start Guide	12

07. Air Shot Mode

How to Use	13
Precautions Before Use	13
Quick Start Guide	14

08. Product Detailed Information

LCD Screen Overview	15
Component Names	16
Operation Instructions	16
Product Components	16

01. Precautions During Use and Storage

Precautions During Use

01. Be careful not to drop or shock the device, as it may cause malfunction or damage.
02. Ensure that no water or cosmetics enter the inside of the main unit.
03. If the product is not operating correctly, do not disassemble it; instead, contact customer support.
04. Remove all metal accessories in contact with the user's body.
05. Do not use the device in conjunction with electrical appliances such as electric heating pads.
06. Do not use the device in hot places such as near fire or direct sunlight, and do not place the main unit or cable near heating appliances.
07. Do not keep it fixed on one area for an extended period during device use; make sure to move it continuously.
08. Be cautious when using the device, as it may malfunction if it comes into contact with other products.
09. Do not use the device for purposes other than its original intention; it may lead to accidents.
10. If you have discomfort due to symptoms like paralysis or difficulty with facial expression, refrain from using the device.
11. Do not tap the head that contacts that skin directly on hard surfaces; it may lead to accidents.
12. Do not strike or drop the main unit on hard objects.
13. Avoid using the device in high temperature, high humidity, or dusty environments, such as bathrooms, kitchens, and hot cars.
14. When using, maintain a distance from electrical appliances such as other beauty devices, TVs, and radios.
15. Do not use on uvular area, wounds, or areas where procedures or surgeries have been performed.
16. Do not use the device at voltages other than the rated voltage. Using it where the rating is exceeded can cause heat generation, leading to fires, electric shock, or malfunction.
17. Do not handle the device or detach the charging cable with wet hands; it can lead to electric shock.
18. Do not attempt to repair, disassemble, or modify the main unit yourself; it can cause malfunctions.
19. The device will not operate while charging.
20. For accurate skin recognition, please grasp the main part of the device as if surrounding it.
21. The appliance is not to be used by persons (including children) with reduced physical, sensory or mental capabilities, or lack of experience and knowledge, unless they have been given supervision or instruction.
22. Children should be supervised to ensure that they do not play with the appliance.

Storage Precautions

01. Store in a place out of the reach of children and away from moisture.
02. Do not store in places where magnetic fields or electro magnetic waves are generated; it may cause malfunctions.
03. After use, clean the head with a wet wipe, clean cloth, or soft towel and store it dry.

04. Ensure that the device's power is turned off before storage.
05. Do not use flammable substances such as gasoline or benzene for cleaning, as it can cause chemical reactions, discoloration, and deformation.

User Precautions

If you have poor health, have consumed alcohol, are currently taking sleeping pills, are fatigued, or are under medical treatment, please do not use the device. If you experience pain or unusual symptoms during use, discontinue use immediately.

Repeated use of the device on the same area or improper usage may cause damage to the skin. If any abnormality appears on the skin, cool the affected area and consult a medical professional immediately.

*Even in regular use, individuals with sensitive skin may experience slight redness. Please read the instructions and precautions carefully and perform proper aftercare.

Do not use the device if you have the following conditions:

01. Individuals with symptoms of redness and stinging due to excessive sun tanning
02. Individuals with allergies, especially those with sensitive skin
03. Individuals using electronic devices worn directly inside the body, such as cardiac pacemakers
04. Individuals using electronic medical devices for life support, such as artificial heart-lung machines
05. Individuals using implanted electronic medical devices such as electrocardiogram devices
06. Individuals using steroid-based hormone medications for an extended period
07. Individuals with liver function disorders who have symptoms of vascular dilatation syndromes in the circulatory system
08. Individuals undergoing outpatient treatment
09. Areas with inflamed acne
10. Areas with dermatitis caused by cosmetics, or individuals with atopic dermatitis
11. Areas with blemishes accompanied by itching, or areas with blemishes caused by physical irritation
12. Areas with metal, plastic, silicone, or other foreign objects inside the body
13. Patients with blood disorders, heart diseases, acute illnesses, bleeding areas, malignant tumors, fractures, infectious diseases, eyelids, trauma areas, skull areas, and other children, pregnant women, breastfeeding women, and elderly individuals

*This product is intended for cosmetic use only. It is not intended to diagnose, treat, cure or prevent any medical condition or disease. Please read all instructions and warnings before use. Use only as directed. Always consult with a healthcare professional if you have any medical concerns or conditions before using the device.

Specification

Model Name	ME-BPRO
Product Name	MEDICUBE AGE-R BOOSTER PRO
Seller	APR US INC
Contact Number	1577-0719
E-mail address	medicube_uscs@apr-inc.com
Address	41 GREENFIELD, IRVINE CA 92614
Manufacturer	APR Factory Co., Ltd.
Address	2nd Floor, 107 Gasan Digital 2-ro, Geumcheon-gu, Seoul, Republic of Korea (Gasan-dong) 50, Wonseokjeongyongso-gil, Poseung-eup, Pyeongtaek-si, Gyeonggi-do, Republic of Korea

KC Certification Registration No.: R-R-pg1-ME-BPRO
FCC ID Number: 2AC7Z-ESPSWROOM1

Product Specifications

Product Size: 1.34*6.98 inches (34*177.3mm)
Input Voltage: DC 5V / 2A (USB-C)
Battery: 3.7V / 2,600mAh Lithium-ion
Power Consumption: max, 1.8 Watt (3.7V x 0.5A)
Weight: 0.34 lbs (155g)
Charging Time: Approximately 4 hours
MADE IN KOREA

Battery Specifications

Quality indication in accordance with the **Electrical Appliances And Consumer Products Safety Control Act Safety Confirmation Report No.** YU101535-23001

Model Name: DTP18650-26F
Product Name: Battery Li-ion Cylindrical Rechargeable Battery
Rated: 3.7V / 2,600mAh

Manufacturer Name: Shenzhen Data Power Technology Ltd.
Country of Manufacture: China
Manufactured Date: Indicated separately at the bottom of the product

This device complies with **part 15 of the FCC Rules. Operation is subject to the following two conditions:** (1) This device may not cause harmful interference, and (2) this device must accept any interference received, including interference that may cause undesired operation.



This device has been tested and found to comply with the limits for a Class B digital device, pursuant to Part 15 of the FCC Rules. These limits are designed to provide reasonable protection against harmful interference in a residential installation. This equipment generates, uses and can radiate radio frequency energy and, if not installed and used in accordance with the instructions, may cause harmful interference to radio communications. However, there is no guarantee that interference will not occur in a particular installation. If this equipment does cause harmful interference to radio or television reception, which can be determined by turning the equipment off and on, the user is encouraged to try to correct the interference by one or more of the following measures:

- Reorient or relocate the receiving antenna.
- Increase the separation between the equipment and receiver.
- Connect the equipment into an outlet on a circuit different from that to which the receiver is connected.
- Consult the dealer or an experienced radio/TV technician for help.

FCC Note Caution: Changes or modifications not expressly approved by the party responsible for compliance could void

the user's authority to operate the equipment.

Exchange / Return Policy

1. Warranty

For all Age-R devices, we offer a 1 year limited warranty period from the date of your original purchase. If your device does not work properly due to a manufacturer's defect, we will replace the defective device free of charge within 1 year. This warranty does not cover the devices damaged by: 1) Accident, misuse, or alteration 2) Use with unauthorized accessories or use other than instructed. 3) Connecting to incorrect current and voltage (We only provide C-type USB cable) This warranty only extends if the devices are used in conjunction with authorized device accessories (such as the enclosed charging cables).

2. Returns

For the Age-R devices, all returns must be initiated within 30 days of receiving your order. Please refer to the information as shown below. **Simple Remorse:** A refund due to a change of mind is only applicable within 30 days of receiving and will only be accepted if the product is returned in original, sealed, and unopened condition. In the case of a return for simple remorse (change of mind), the customer needs to bear the shipping fee. For international orders: You will be responsible for paying for customs fee and returning shipping fee. Additionally, we cannot provide free return shipping labels for international customers. **Damaged or defective product:** 1) Please reach out to us via our Customer Service Center email with the following details: First name and last name, email address, phone number, order number. Kindly attach a photo or video describing your issue. 2) We will proceed to issue a confirmation email for you (please note that our Customer Service usually takes 2-3 business days to respond). 3) After receiving a confirmation email, please send the product back to our warehouse via the return address. You will be informed of the return address after the email confirmation. 4) Once the product has arrived at our warehouse, our staff will inspect the condition of the product. 5) In case of product defect, we will proceed to exchange and send a new product to you. *Note: This process may take up to 1 month, including the time taken to ship the product back to our warehouse, and the time taken to inspect the product.

Subject of Recommendation of Lithium Battery Discarding and Charging Method

Warning: Since it may accompany danger such as heating, fire, and explosion, please observe the following matters. **1) Handling Matters** Since a swollen battery that can be visually identified may be dangerous, immediately contact the manufacturer or the seller. Use only the designated charger. Keep away from fire (Do not put inside a microwave oven). Do not leave it inside a car in summertime. Do not store or use at high temperature and humid place such as sauna. Do not use it for a long time while placing it on blanket, electric pad, and carpet. Do not store at a sealed space while leaving the power on. Be cautious not to contact the electrical terminal with metal products such as necklace, coins, key, and watch. Use the secondary lithium battery warranted by the manufacturer. Do not implement behaviors such as disassembly, compressing, and penetrating. Do not apply abnormal impact such as dropping it from a high place. Do not expose to a temperature above 50 celcius. Do not contact with humidity. **2) Disposal Guideline** Do not arbitrarily dispose used up battery. When disposing the battery, do not incinerate or put it inside a fire. Explosion and fire may occur due to heat. The method of battery disposal may vary according to countries and regions. Dispose with appropriate method. **3) Recommendations regarding Charging Method** Do not charge the battery with the method other than the one shown in the user manual. Fire or explosion may occur. **Complete Charge Time : About 4 hours** *Charge time may vary depending on the battery remnant amount of portable battery or surrounding temperature or charging environment. It may change without notice for performance improvement in specifications and exterior appearance.

02. BOOSTER PRO Guide

Taking the Lead Again with the All New 6-in-1 BOOSTER PRO

Revolutionary performer offering visible results in radiance, volume, elasticity, pores, and sonic vibration. All these aspects of care can be achieved with a single BOOSTER PRO.



Main Mode Overview*

*Before use, be sure to familiarize yourself with the usage methods and recommended frequency for each mode.

Radiance Booster Mode

BOOSTER MODE

Usage Instructions Apply an appropriate amount of skincare product and attach the head to the skin. Roll gently in a circular motion to allow the product to be absorbed.

Recommended Frequency 1-3 times daily (5-10 minutes per session)

Line MC Mode

MC MODE

Usage Instructions Apply an appropriate amount of skincare product and attach the head to the skin. Use by moving from the inside of the face to the outside while keeping the head attached.

Recommended Frequency 1-3 times daily (5-10 minutes per session)

Elasticity Derma Shot Mode

DERMA SHOT MODE

Usage Instructions Apply an appropriate amount of skincare product and move slowly across the skin. Pause for 2 seconds at muscle points to relax the muscles.

Recommended Frequency 1-3 times daily (5-10 minutes per session)

Pores Air Shot Mode

AIR SHOT MODE

Usage Instructions After cleansing and drying the skin, gently glide the head's edge over the face.

Recommended Frequency 2-3 times a week (5 minutes per session)

Mode Sequence

*If different modes are being used on the same day, it is recommended to follow this sequence. Be sure to check the recommended frequency before use.

AIR SHOT MODE



BOOSTER MODE



MC MODE



DERMA SHOT MODE

Recommended Usage:
2-3 times a week

Recommended Usage: 1-3 times daily

LED INDICATION

*LED colors for each mode are preset, and LED color changes can only be made through the AGE-R app.



Blue



Orange



Green



Red



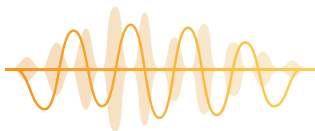
Purple

Mode-Specific Sonic Vibration

*The Sonic Vibration can only be turned ON/OFF through the AGE-R app.

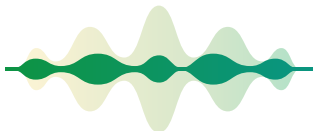
Radiance Booster Mode

Vibrations are designed to help the skincare product absorb deeply.



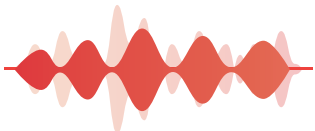
Line MC Mode

Vibrations are synchronized with the lifting motion.



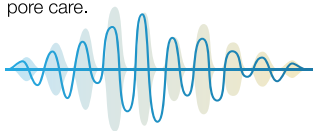
Elasticity Derma Shot Mode

Vibrations are suitable for muscle care.



Pores Air Shot Mode

Vibrations are intended for comprehensive pore care.



Skin Contact Sensor

*Due to the sensitive sensor, it may activate when there is a significant amount of skincare product on the head. For accurate skin recognition, Please grasp the main part of the device with the palm of your hand.



Smart and Safe Skin Contact Sensor Feature

Equipped with an advanced skin contact sensor that illuminates the LED light only when in contact with the skin, recording the duration of contact as the treatment time.

03. Bluetooth Connection

Achieve Full Control with AGE-R

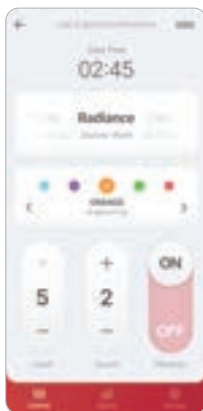
From setting your preferred mode, intensity, volume, vibration, and LED colors to recording every aspect of your skincare journey with automatic reports. Use it effortlessly and keep track of your transformation.

Bluetooth Function Overview

01

Remote Control

Care made easy and convenient.



02

Automatic Reports

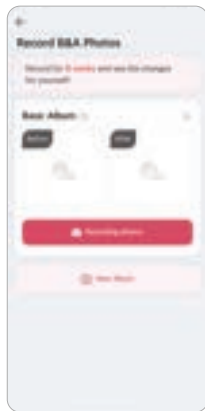
Turn your skincare routine into a habit.



03

Recording Before & After Use

Check for changes after 8 weeks of use.



*Usage records will be uploaded to the report only if the total usage time (skin contact time) for each mode is 20 seconds or more after turning the power on.

*The default volume setting is at level 3, and setting it to 0 (mute) will mute all sounds effects, including power on/off sound.

*The volume level and vibration ON/OFF status you change in the Control tab during use will be maintained as the default settings.



Get the most out of your BOOSTER PRO

Download the AGE-R app for free right now and experience the AGE-R BOOSTER PRO in a more professional and convenient way.

*Scan the QR code or search for 'AGE-R' in the app store.

Bluetooth Connection Instructions

*Make sure your smartphone's Bluetooth is turned on and the BOOSTER PRO is powered on to establish a connection.

01



02



03



04



- ① Access the AGE-R app and click on "Connect BOOSTER PRO".
- ② Turn on Bluetooth on your smartphone and power on the BOOSTER PRO.
- ③ After confirming the detected device, click on the "Connect" icon.
- ④ Verify that the "Connection Successful" screen and the Bluetooth connection sound from BOOSTER PRO are displayed correctly.

Precautions When Connecting via Bluetooth

1. Remote Control

- The Remote Control feature operates only when connected with the device, and functions such as LED color change, volume control, and vibration ON/OFF are available only within the Remote Control feature after Bluetooth connection.
- The volume level and vibration ON/OFF settings you configure in Remote Control will be saved as default values, but LED color changes will not be saved.

2. Automatic Reports

- Usage history when the device is used without being connected to the app is temporarily stored in the device and will automatically upload to the app's reports when connected.
- The intensity level in the report and mode-specific LED colors are saved as the longest used level and color.

3. Default LED Color Changes for Each Mode

- Changing the default LED color for each mode is possible only when the device is connected and can be done in the "Settings" tab.

4. Device Connection Failure

- Ensure that the device is not connected to another smartphone. If it is connected to another smartphone, disconnect it from the connected smartphone's app by going to [BOOSTER PRO Banner] → [Settings] → [Device Disconnect], and then try again.

5. Switching to a Different Smartphone

- If you want to connect the device to a different smartphone, first run the app on the currently connected smartphone. Go to [BOOSTER PRO Banner] → [Settings] → [Device Disconnect] to disconnect it, and then try connecting it to the new smartphone.



Only Available When Bluetooth is Paired

- Mode-Specific Color Changes
- Sonic Vibration ON/OFF
- Volume Control
- Checking Care Reports

04. Booster Mode

Booster Mode that Helps Enhance Radiance

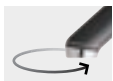
BOOSTER MODE

Default Setting | Orange LED

Can be used with various types of skincare products and face masks. Please choose the most suitable method among the three touching methods below and use accordingly.



How to Use



Watering

Place the head against the skin and roll it in a circular motion, providing a boosting effect.



Boosting

Press and slide the head against the skin as if gliding, providing a boosting effect.



Focus

Place the head against the skin and press it on one spot for 1-2 seconds before moving to a next spot.

Precautions Before Use

*When using the product for the first time, start with the lowest setting and adjust as needed during use.



Prohibited Areas of Use

Do not use on the uvular area, open wounds, or areas where procedures or surgeries have been performed.



Recommended Areas for Low-Level Use

For sensitive areas such as the eyes, nose, and mouth area, it is recommended to use at a low level.



Booster Mode Usage Frequency

We recommend using it 1-3 times a day, following the recommended usage method.

Quick Start Guide



STEP 01

After cleansing, apply an appropriate amount of skincare product to the skin.



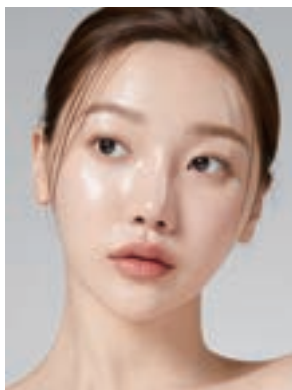
STEP 02

Ensure the head is in complete contact with the skin surface, then gently massage and absorb the skincare product.



STEP 03

Refer to the boosting method and continue using until the skincare product is fully absorbed. (1-3 times a day / 5-10 minutes per use)



STEP 04

Once the skincare product has been mostly absorbed, finish with targeted care on desired areas.

05. MC Mode

MC Mode for Line Volumizing Care



MC MODE

Default Setting | Green LED

Please use after applying the skincare product.

Adjust the amount of skincare product if you feel the stimulation to be too weak.

How to Use



LINING

Attach the head to the skin and use it in an upward motion.

TIP Enhancing the Effects of MC Mode

Please start with the MC Mode to help volumize fine and deeper lines. Then, switch to the Derma Shot Mode to massage the muscle for more elastic and rejuvenated skin.

MC MODE



DERMA SHOT MODE

It is recommended to use in this order.

Precautions Before Use

*When using the product for the first time, start with the lowest setting and adjust as needed during use.



Prohibited Areas of Use

Do not use on the uvular area, open wounds, or areas where procedures or surgeries have been performed.



Recommended Areas for Low-Level Use

For sensitive areas such as the eyes, nose, and mouth area, it is recommended to use at a low level.



MC Mode Usage Frequency

We recommend using it 1-3 times a day, following the recommended usage method.



STEP 01

After cleansing, apply an appropriate amount of skincare product to the skin.



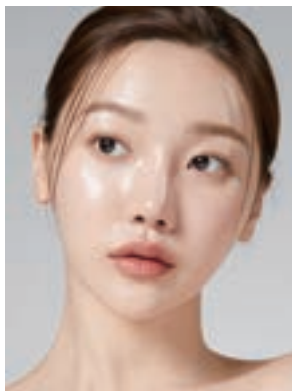
STEP 02

Ensure the head is in complete contact with the skin surface, then move the head from the inside of the face to the outside in an upward motion.



STEP 03

For the neck and forehead areas, use it once more from bottom to top.



STEP 04

Once the skincare product has been mostly absorbed, finish with targeted care on desired areas.

06. Derma Shot Mode

Derma Shot Mode for Elasticity Care

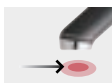


DERMA SHOT MODE

Default Setting | Red LED

After applying skincare product, massage the area where muscle stimulation works best. While using it, you can observe the movement of your muscles directly.

How to Use



Focus

Slowly move the head in complete contact with the skin. Pause for 1-2 seconds at the points where muscle stimulation works best to relax the muscles.

TIP Enhancing the Effects of Derma Shot Mode

Please start with the MC Mode to help volumize fine lines and deeper lines. Then, switch to the Derma Shot Mode to stimulate the muscles for more elastic and rejuvenated skin.

MC MODE > **DERMA SHOT MODE** It is recommended to use in this order.

Precautions Before Use

*When using the product for the first time, start with the lowest setting and adjust as needed during use.



Prohibited Areas of Use

Do not use on the uvular area, open wounds, or areas where procedures or surgeries have been performed.



Recommended Areas for Low-Level Use

For sensitive areas such as the eyes, nose, and mouth area, it is recommended to use at a low level.



Derma Shot Mode Usage Frequency

We recommend using it 1-3 times a day, following the recommended usage method.



STEP 01

After cleansing, apply an appropriate amount of skincare product to the skin before use.



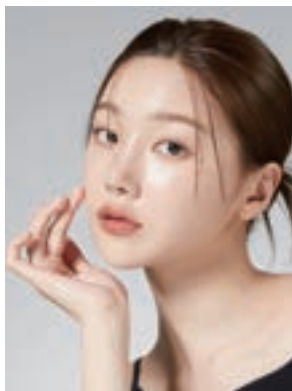
STEP 02

With the head in full contact with the skin, move slowly and pause for 1-2 seconds at areas where you feel the most stimulation, relaxing the muscles.



STEP 03

Massage gently from the neck line to the trapezius area and collarbone line.



STEP 04

Use for 5-10 minutes a day to care for a more elastic face.

07. Air Shot Mode

Air Shot Mode for Pore Care

AIR SHOT MODE

Default Setting | Blue LED

After cleansing, be sure to use it on dry skin, lightly sweeping it with the edge of the head. It won't properly transmit stimulation when used on wet skin.



How to Use



SWEEPING

Gently make contact with the skin using the edge of the head and sweep it in one direction.



For Broad Areas

When using on broad areas, sweep with the edge.



For Smaller Areas

For localized areas such as nose, chin, and between the eyebrows, gently sweep it with the tip.

Precautions Before Use

*When using the product for the first time, start with the lowest setting and adjust as needed during use.



Prohibited Areas of Use

Do not use on the uvular area, open wounds, or areas where procedures or surgeries have been performed.



Recommended Areas for Low-Level Use

For sensitive areas such as the eyes, nose, and mouth area, it is recommended to use at a low level.



Air Shot Mode Usage Frequency

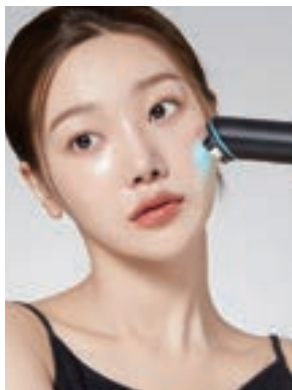
We recommend using it once a day, 2-3 times a week, and taking a break for 2-3 days after each use.



STEP 01

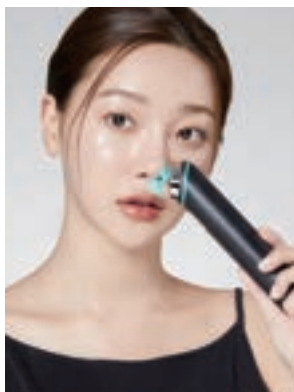
Use it on completely dry skin after cleansing.

**It won't function properly if the skin is wet.*



STEP 02

Gently make contact with the skin using the edge of the head and sweep it in one direction.



STEP 03

For localized areas such as nose, chin, and between the eyebrows, gently sweep it with the tip.



STEP 04

After 5 minutes of use, use the Booster Mode to absorb the skincare product for radiant skin.

08. Product Detailed Information

LCD Screen Overview



Default Screen

① Bluetooth Indicator



② Battery Indicator



Remaining Battery



Low Battery
(*Requires Charging)

③ Current Usage Mode

④ Intensity Level

⑤ Care Time



Screen While Awaiting Mode Change After 5-Minute Care

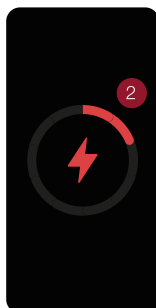
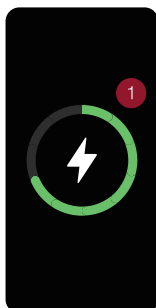
① Automatic Shutdown Countdown



Will automatically shut down after 10 seconds if no button operation is performed.

② Additional Care Guidance

MODE button and app operation can be used to change to a different mode.



Charging/Low Battery Screen

① Charging Screen

Displayed in green, allowing you to check the charging status.

(*Does not operate during charging)

② Low Battery Screen

Displayed in red when the battery is low, indicating that charging is required.

③ Fully Charged Screen



The entire ring is displayed in green.